

Campbellton 231 Tract



Overview

U.S. Highway 231 is a vital transportation link that travels over 900 miles through five states beginning near Chicago and terminating in Panama City, Florida. The last southern stretch from Dothan, Alabama to Panama City (north of Interstate 10) is the location of the 533-acre Campbellton 231 Tract. The western parcel has 296 acres while the eastern parcel has 237 acres - each can be purchased separately. Collectively, there are 1.25 miles of four-lane frontage with an Annual Average Daily Traffic count of 15,829 vehicles. This tract is located within the city limits of Campbellton, Florida and has three-phase electrical power that runs up the east side of U.S. Highway 231.

This is a rare opportunity to have a significant foothold along a major corridor with many future possibilities.

At a Glance:

Acreage:

237-533± acres

Asking Price:

\$4,500 per acre

Location:

Jackson County, Florida

Special Attributes:

- 1.25 Miles of US Hwy 231 Frontage
- Rare Investment Opportunity
- 15,289 Daily Traffic Count
- 3-Phase Power on East side of Hwy

Arnie Rogers, *Licensed Real Estate Broker*

Verdura Realty, LLC • 316 Williams Street • Tallahassee, FL 32303

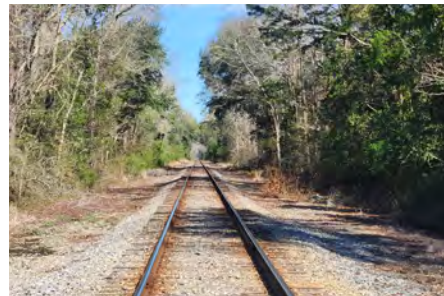
Cell: 850.491.3288 • Email: arogers@verduraproperties.com

www.VerduraProperties.com



Campbellton 231 Tract

Photos



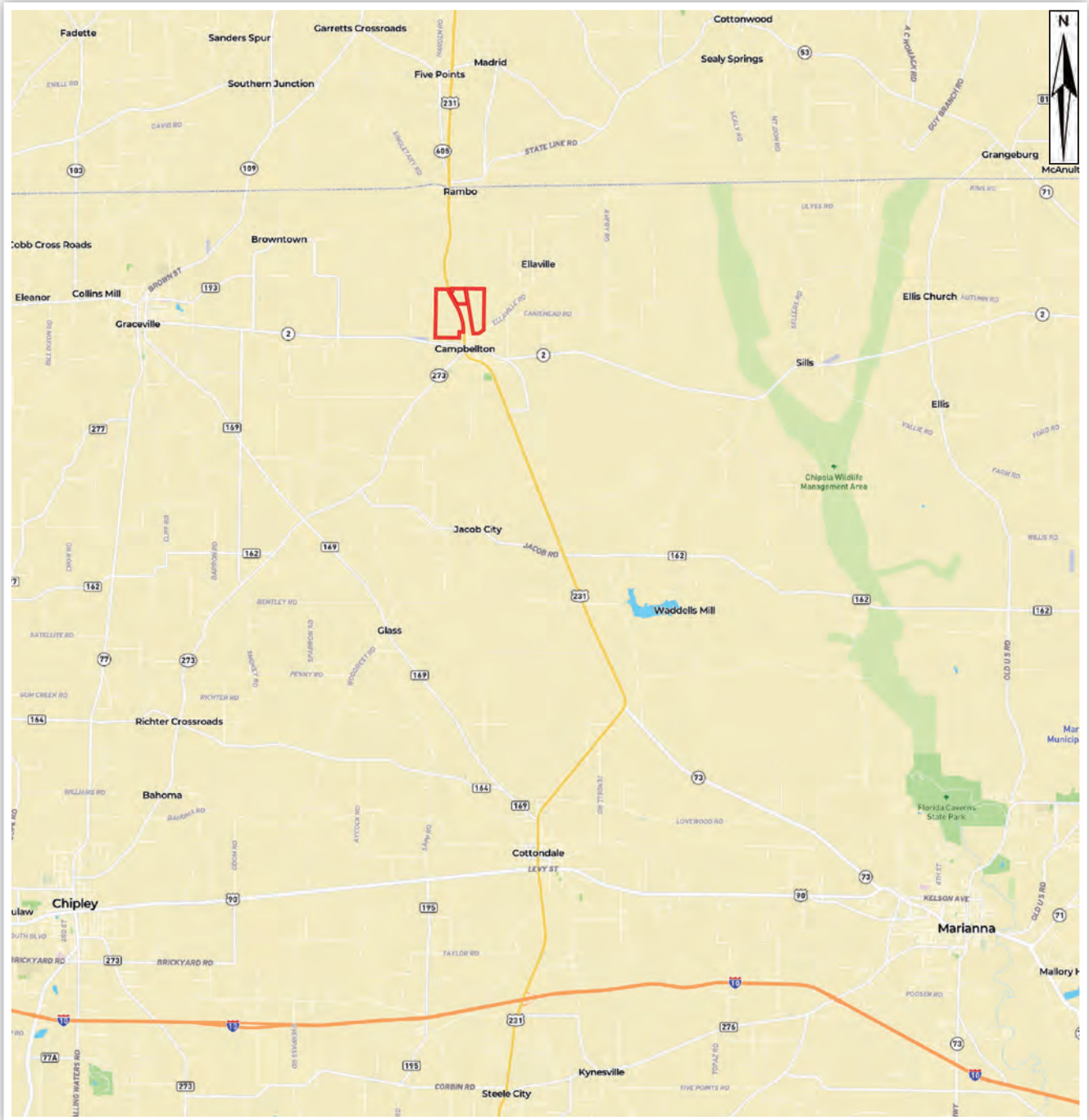
Arnie Rogers, *Licensed Real Estate Broker*
Verdura Realty, LLC • 316 Williams Street • Tallahassee, FL 32303
Cell: 850.491.3288 • Email: arogers@verduraproperties.com
www.VerduraProperties.com



Please note that while all information is believed to be reliable, none is guaranteed.

Campbellton 231 Tract

Location



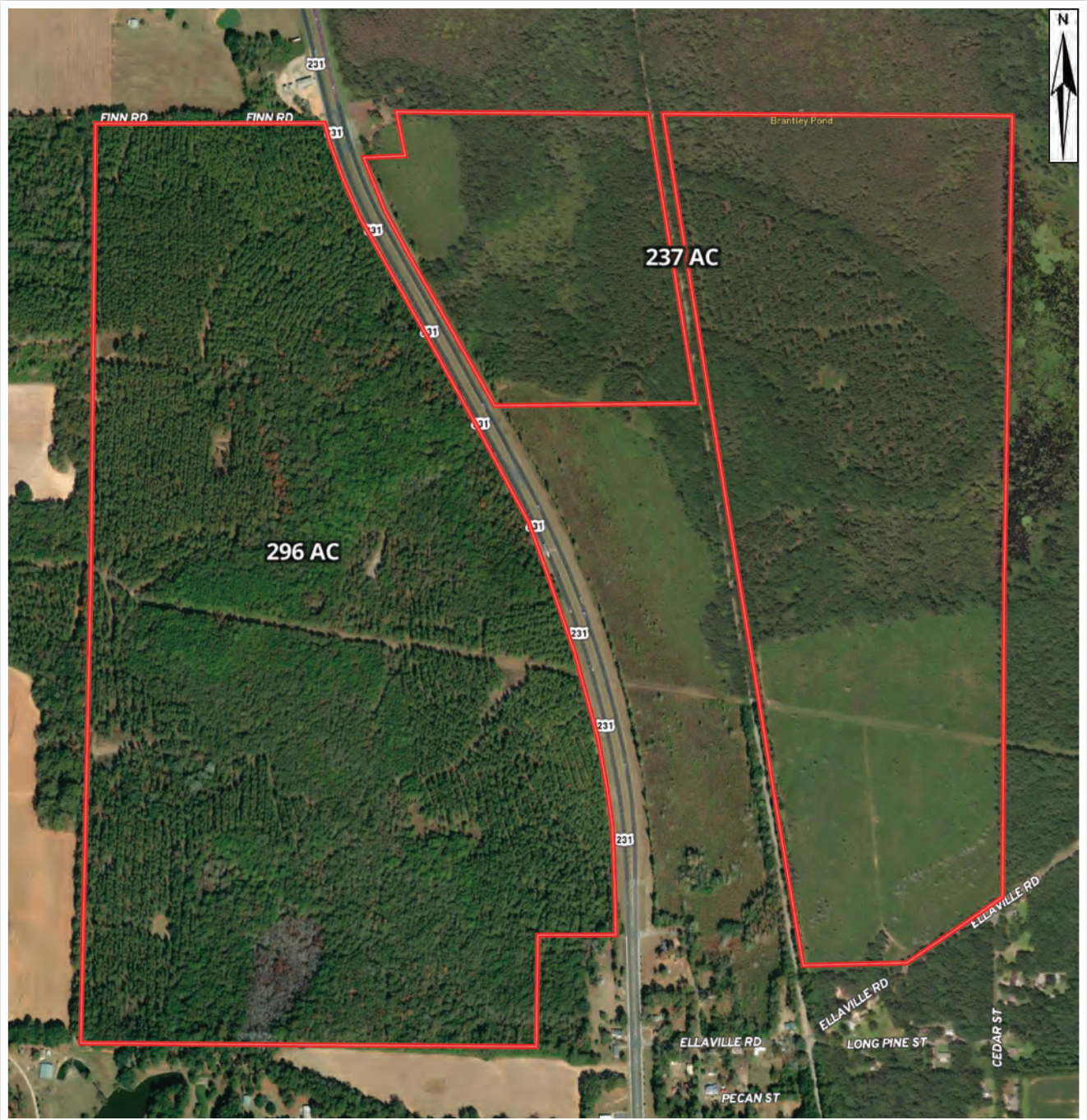
Arnie Rogers, Licensed Real Estate Broker
Verdura Realty, LLC • 316 Williams Street • Tallahassee, FL 32303
Cell: 850.491.3288 • Email: arogers@verduraproperties.com
www.VerduraProperties.com



Please note that while all information is believed to be reliable, none is guaranteed.

Campbellton 231 Tract

Aerial



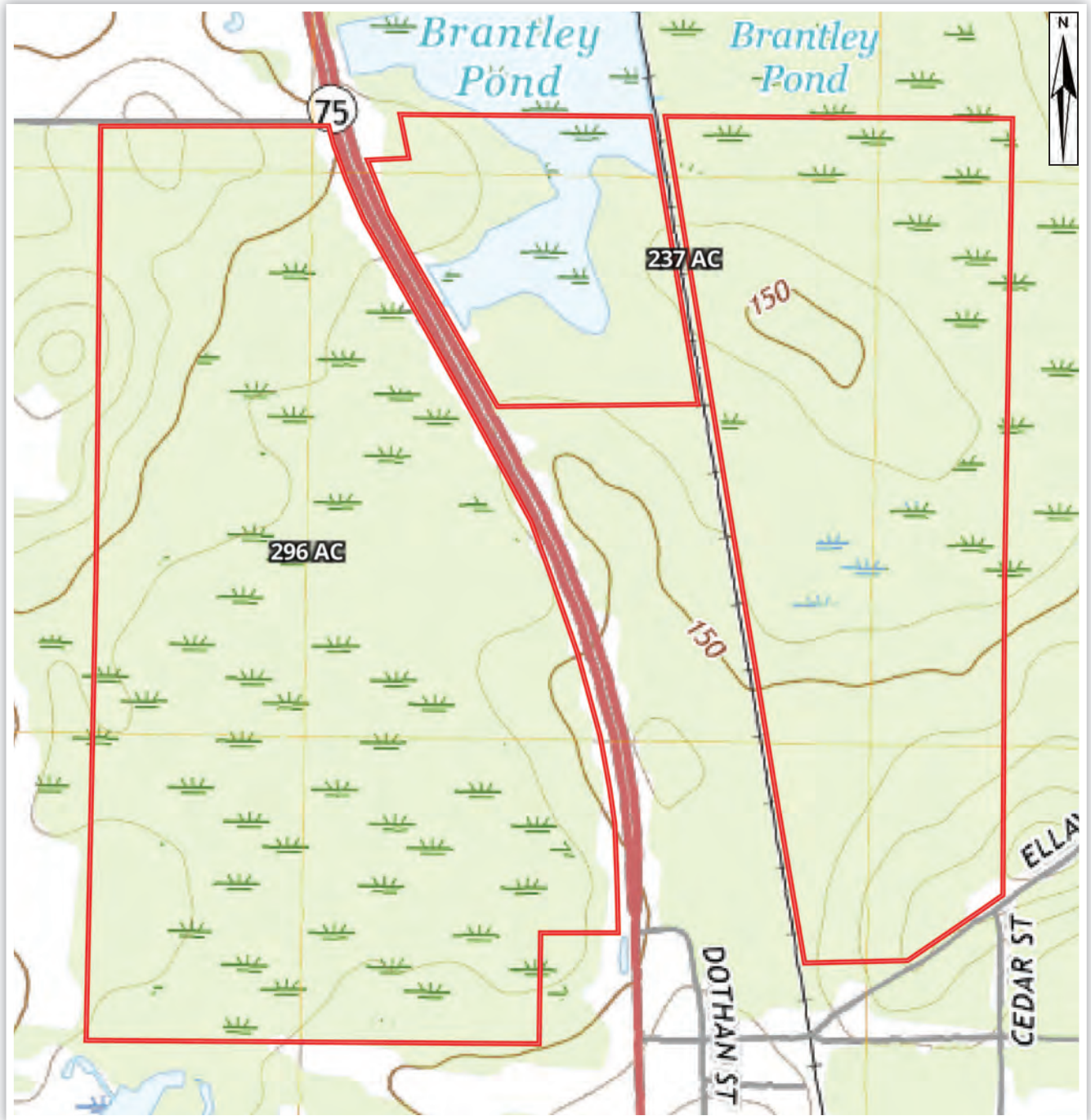
Arnie Rogers, Licensed Real Estate Broker
Verdura Realty, LLC • 316 Williams Street • Tallahassee, FL 32303
Cell: 850.491.3288 • Email: arogers@verduraproperties.com
www.VerduraProperties.com



Please note that while all information is believed to be reliable, none is guaranteed.

Campbellton 231 Tract

Topo



Arnie Rogers, Licensed Real Estate Broker
Verdura Realty, LLC • 316 Williams Street • Tallahassee, FL 32303
Cell: 850.491.3288 • Email: arogers@verduraproperties.com
www.VerduraProperties.com



Please note that while all information is believed to be reliable, none is guaranteed.